



Janie Mae Crews Owen

September 8, 1936 - December 3, 2015

Janie Mae (Jane) Crews Owen, 79, of Lynchburg died Thursday, December 3, 2015 at Runk and Pratt Assisted Living. She was the wife of the late Radford Kenley Owen, Sr.

She was born September 8, 1936 in Lynchburg, a daughter of the late Walter Lee Crews and Emma Susan Dews Crews. She was a member of Straightstone Baptist Church and attended Calvary Baptist Church, in addition, she was a member the Daughters of the American Revolution, Dames of the Court of Honor, Chapter XI-XI of Beta Sigma Phi, and retired from Aerofin Corporation. One of Jane's favorite things to do outside of church activities was attending theatrical productions with her dear friend Joan Rowles.

She is survived by two sons, W. Lee Owen and his wife Laurie of Forest and Jason C. Owen and his friend Kris of Lynchburg; one sister, Evelyn Crews Shelton and her husband Garland of Gretna; and four grandchildren, Kasey Owen of Blacksburg, Colton Owen of Forest, Brittany Adams of Richmond, and Caroline Bryant of Forest.

She was preceded in death by a son, Radford Kenley (Ken) Owen, Jr.

A funeral service will be conducted at 2:00 p.m., Monday, December 7, 2015

at Straightstone Baptist Church by the Rev. Jason Mauk with interment to follow in the church cemetery.

The family will receive friends from 7:00 until 8:30 p.m., Sunday at Finch and Finch Funeral and Cremation Service, Altavista.

The family suggests that those wishing to make memorials consider Friends of Lynchburg Hematology and Oncology, 1701 Thomson Dr., Suite 200, Lynchburg, VA 24501 or Seven Hill Hospice, 2250 Murrell Rd., Lynchburg, VA 24501.

Cemetery Details

Straightstone Baptist Church Cemetery

4660 Straightstone Road
Long Island, VA 24569

Previous Events

Visitation

DEC 6. 7:00 PM - 8:30 PM (ET)

Finch and Finch, Altavista
809 Main St.
Altavista, VA 24517

Funeral Service

DEC 7. 2:00 PM (ET)

Straightstone Baptist Church
4660 Straightstone Rd.
Long Island, VA 24569

Tribute Wall

LK

“ I hope you all still check this from time to time. I was so sorry to read of your Mother's passing, but the last time I saw her, I was afraid it would be the last. We worked at Wiley & Wilson together for 7 years, and were friends for many more (even though it was long distance after I moved to NC). You probably saw a Christmas Card from me last December, but I didn't realize until today that she had left us all. She was a wonderful, outspoken, and determined person. Please except my sympathy for your loss. With love,
Linda Ketron

Linda Ketron - June 14, 2016 at 10:03 AM

DN

“ Condolences to the Owen and extended family. Very sorry to hear of your loss.

Dale Nuckles - December 08, 2015 at 03:27 PM

JC

“ So sorry for your loss, I met Jane through a mutual friend , the late Dara Buchanan, who was also a member of Beta Sigma Phi Sorority. Jane was a wonderful person and friend.

Jane Caldwell - December 08, 2015 at 07:32 AM

PD

“ Pat Clay Templeton And Donna lit a candle in memory of Janie Mae Crews Owen



Pat Clay Templeton and Donna - December 07, 2015 at 09:24 AM

 Anna
Martin

“ Jane was always a bright, gentle soul who could make anyone's day. She was a kind-hearted person who you could talk to about anything and everything, and she always gave her input. "Our memories build a special bridge when loved ones part. To help us feel were with them still and soothe a grieving heart. They span the years and warm our lives, preserving ties that bind our memories, build a special bridge, and bring us a peace of mind."
Thoughts, prayers, and my deepest, sincere condolences go out to all Jane's family, friends, and people she's touched. Thinking of you all, wishing you hope in the midst of sorrow, and comfort in the midst of pain.
I love and miss you Janie! Rest in Peace my love. and see you soon!

-Anastacia Martin

Anna Martin - December 07, 2015 at 08:59 AM

LR

“ So sad for this tragic loss. Jane was such a beautiful lady in All ways.

Linda and Raymond Rice - December 07, 2015 at 08:32 AM



“ Arrive in Style was purchased for the family of Janie Mae Crews Owen .



December 06, 2015 at 01:29 AM

DT

“ Dave Tomlin lit a candle in memory of Janie Mae Crews Owen



Dave Tomlin - December 05, 2015 at 11:09 PM

DT

Great memories of working with Jane at BHS and helping her with algebra at CVCC. Her pride in her sons, wit, and charm were her testaments. My condolences to Lee and Jason.

Dave Tomlin - December 05, 2015 at 11:25 PM

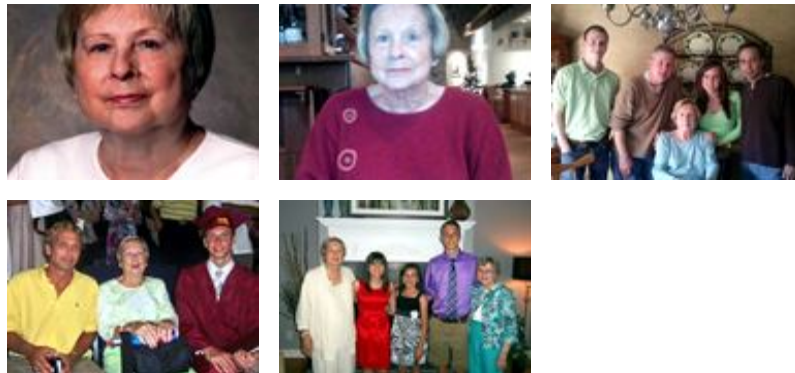
VM

“ I have such pleasant memories of Jane. I met her at Calvary and saw her most often when she was in The Summit Rehab Center. Whatever consolation there may be in friendly sympathy is extended in deepest sincerity. Blessings, Virginia Marshburn

Virginia Marshburn - December 05, 2015 at 10:00 AM



“ 27 files added to the album Life Tributes



Finch & Finch, Inc. Funeral & Cremation Service - December 05, 2015 at 08:34 AM

MR

“ We extend our sincere sympathy to ALL her family she loved so dearly. Her sons Lee & Jay were so attentive. I feel very blessed to have been a friend of Jane’s. She was such a lovely person, and example of God’s Love and Grace to all and will be missed very much.
Marie & Clark Rogers



Marie Rogers - December 05, 2015 at 07:30 AM

JC

“ Jerry & Martha Clay lit a candle in memory of Janie Mae Crews Owen



Jerry & Martha Clay - December 04, 2015 at 10:38 AM

DM

“ Dot [rorer] Mitchell lit a candle in memory of Janie Mae Crews Owen



dot [rorer] mitchell - December 04, 2015 at 05:11 AM

DM

I am so sorry for youll loss. prayers for this family

dot [rorer] mitchell - December 04, 2015 at 05:13 AM

JC

Lee & Jay.Sorry for your loss. Dara Jean and your mother were great friends. John Buchanan

John C.Buchanan - December 05, 2015 at 11:52 AM

EE

“ Eugene & Mary Edmonds lit a candle in
memory of Janie Mae Crews Owen



Eugene & Mary Edmonds - December 03, 2015 at 09:02 PM