



Mary Magdalene Crews Boley

September 14, 1929 - October 20, 2016

Mary Magdalene Crews Boley, 87, of Lynch Station died Thursday, October 20, 2016 at her residence. She was the beloved wife of John Thomas (Pete) Boley for seventy years.

She was born September 14, 1929 in Pittsylvania County, a daughter of the late Downey Charlie Crews and Mary Watson Crews. She was a member of Lynch Station Baptist Church and a retired bookkeeper with Burlington Industries, Klopman Mills Division. Maggie loved working with her flowers, cooking, making homemade ice cream and canning all the vegetables out of Pete's and her garden.

She is survived by her daughter, Wandalyn G. Boley of Manassas.

She was preceded in death by two sisters, Bea Dalton and Shelby Jean Lacks; and a brother, Leroy Crews.

A funeral service will be conducted at 2:00 p.m., Sunday, October 23, 2016 at Finch and Finch Chapel, Altavista by Chaplain Deb Zuercher with entombment to follow in Altavista Memorial Park Mausoleum.

The family will receive friends one hour prior to the service at Finch and Finch Chapel and other times at the residence.

A special thank you to all our family, friends and neighbors for their care, love and support to our beloved "Maggie".

The family suggests that those wishing to make memorials consider the Lynch Station Baptist Church, 779 Powell Rd., Lynch Station, VA 24571 or Christopher Youth Center, 205 Smith Ave., Monroe, LA 71203.

Cemetery Details

Altavista Memorial Park Mausoleum

642 Wards Road
Altavista, VA 24517

Previous Events

Visitation

OCT **23**. 1:00 PM - 1:45 PM (ET)

Finch and Finch, Altavista
809 Main St.
Altavista, VA 24517

Funeral Service

OCT **23**. 2:00 PM (ET)

Finch and Finch Chapel
809 Main St.
Altavista, VA 24517

Tribute Wall



“ *Finch & Finch, Inc. Funeral & Cremation Service created a Tribute Video in memory of Mary Magdalene Crews Boley*



Finch & Finch, Inc. Funeral & Cremation Service - October 22, 2016 at 01:06 PM

GW

“ *"Miss Maggie" was a sweet and very special lady.....I knew her a a generous and caring person that always put other people before herself. I'm sorry that I didn't know of her passing until afterwards. I know you will cherish your precious mother and wife forever.*

Glenda Wood - November 17, 2016 at 08:54 AM

CS

“ *I used to help Maggie when I worked with Kelly Services..She was very special to me..Kept me laughing and loving her every minute .May she rest in peace and my thoughts and prayers are with Pete and their daughter..*

Charlotte Shelton

Charlotte Shelton - November 15, 2016 at 11:12 PM

PV

“ *Paul And Jean VanKerckhove lit a candle in memory of Mary Magdalene Crews Boley*



Paul and Jean VanKerckhove - November 02, 2016 at 09:31 AM



“ *I'll always love this family they was so good to me I worked for them for a good while always had good times and memories Maggie was a very loving and caring lady who had such a big heart my prayers are for the family Pete and Wanda*



Jessica Lucas - October 23, 2016 at 03:18 PM

CL

“ *Our hearts and prayers go out to Pete and Wanda. So many memories of living in the same community for so many years with the three of you. May God give you peace in this difficult time.*

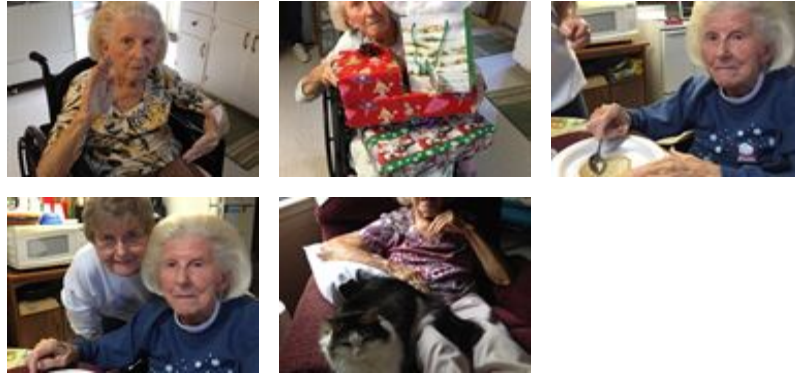


Philip and Carolyn

Carolyn Little - October 22, 2016 at 01:58 PM



“ 9 files added to the album *Life Tributes*



Finch & Finch, Inc. Funeral & Cremation Service - October 22, 2016 at 12:55 PM

GW

“ *Gwenda Willard lit a candle in memory of Mary Magdalene Crews Boley*



Gwenda Willard - October 22, 2016 at 09:23 AM

SB

“ *Family,*

I worked with Maggie at Klopman. She was a precious lady and loved by all. She will be missed. You are in my thoughts and prayers.

Sue Blackstock



Sue Blackstock - October 22, 2016 at 09:11 AM

RH

“ Our thoughts and prayers are with the **BOLEY** family from the *Himelrights*

roy himelright - October 22, 2016 at 08:26 AM

DG

“ I had the pleasure of working with Maggie at *Roses*. She was one of the sweetest ladies I ever met.



Debra Mayhew Garrett - October 21, 2016 at 10:23 PM

DG

“ I had the pleasure of working with Maggie at *Roses*. She was one of the sweetest ladies I ever met.



Debra Mayhew Garrett - October 21, 2016 at 10:22 PM

CD

“ *Carlton & Linda Dalton*



Carlton&Linda Dalton - October 21, 2016 at 08:43 PM

JK

“ *Janice Kelley lit a candle in memory of Mary Magdalene Crews Boley*



Janice Kelley - October 21, 2016 at 07:14 PM

SF

“ *Rest in Peace....God bless the family*



Shirley Forloines - October 21, 2016 at 06:13 PM

BC

“ *Butch & Glenna W. Carr lit a candle in memory of Mary Magdalene Crews Boley*



Butch & Glenna W. Carr - October 21, 2016 at 04:59 PM

LY

“ *Lyndy purchased the Beautiful in Blue for the family of Mary Magdalene Crews Boley.*



Lyndy - October 21, 2016 at 04:38 PM

JD

“ *Joyce Dalton lit a candle in memory of Mary Magdalene Crews Boley*



Joyce Dalton - October 21, 2016 at 03:58 PM

LY

“ *Miss Maggie was a beautiful lady inside and out! I had the privilege of meeting her many years ago and her southern charm was only outdone by her hospitality! She, Mr. Pete and devoted daughter Wandalyn, had the best garden with canned beets, green beans and pickles ever! The days at the beach are some of the fondest memories of love, laughter and picnionary! She will be missed by so many...sincerest sympathy to Pete, Wanda, friends and family.*

Lyndy - October 21, 2016 at 03:16 PM

TH

“ *Tommy&Shirley Hutcherson lit a candle in memory of Mary Magdalene Crews Boley*



Tommy&Shirley Hutcherson - October 21, 2016 at 02:55 PM

TD

“ *Pete & Wanda,
So very sorry to hear about Maggie. She was
such a sweet lady. Losing Mom is hard
Wanda. Keeping you both in our thoughts and
prayers.*

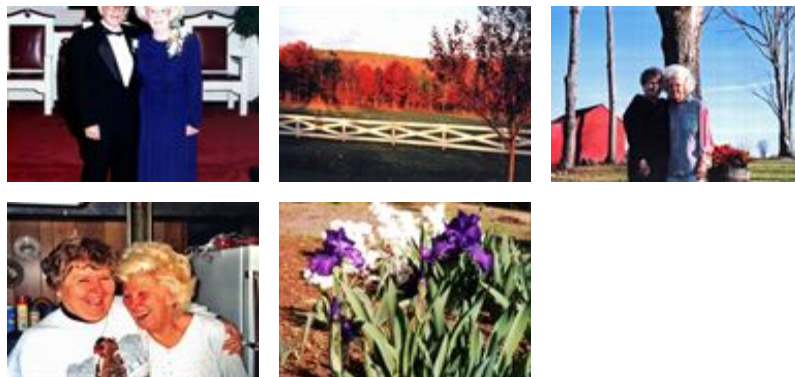


Lynn and Teresa Cox David and family

Teresa David - October 21, 2016 at 12:10 PM



“ *28 files added to the album Life Tributes*



Finch & Finch, Inc. Funeral & Cremation Service - October 21, 2016 at 11:52 AM

JH

“ *Jamie & Kim Hodges lit a candle in memory
of Mary Magdalene Crews Boley*



Jamie & Kim Hodges - October 21, 2016 at 10:30 AM

PP

“ *Pat Pcukette lit a candle in memory of Mary Magdalene Crews Boley*



Pat Pcukette - October 21, 2016 at 10:17 AM

PP

I am so sorry to hear this, Maggie put up a good fight for a number of years. Prayers are with the family in this time of sorrow.

Pat Pcukette - October 21, 2016 at 10:18 AM

GR

“ *Geneieve Rowland lit a candle in memory of Mary Magdalene Crews Boley*



Geneieve Rowland - October 21, 2016 at 09:22 AM

KL

“ *Kahlyn Lacks lit a candle in memory of Mary Magdalene Crews Boley*



Kahlyn Lacks - October 21, 2016 at 09:01 AM

DR

“ *Darlene R lit a candle in memory of Mary Magdalene Crews Boley*



darlene r - October 21, 2016 at 08:01 AM

DR

prayers of comfort and sympathy are extended to each of the family. Darlene and Billy

darlene r - October 21, 2016 at 08:04 AM

SH

“ *Sara Crews And Bennie Hawkins lit a candle in memory of Mary Magdalene Crews Boley*



Sara Crews and Bennie Hawkins - October 21, 2016 at 07:45 AM

EP

“ *Eddie & Gayle Puckete lit a candle in memory of Mary Magdalene Crews Boley*



Eddie & Gayle Puckete - October 21, 2016 at 07:43 AM

GG

“ *Gwen Goggin lit a candle in memory of Mary Magdalene Crews Boley*



Gwen Goggin - October 21, 2016 at 04:21 AM

RB

“ *Robin Boley lit a candle in memory of Mary Magdalene Crews Boley*



Robin Boley - October 21, 2016 at 12:35 AM

ML

“ *Mickey And Julie Lacks lit a candle in memory of Mary Magdalene Crews Boley*



Mickey and Julie Lacks - October 20, 2016 at 08:22 PM

CH

“ *Connie P Hall sent a virtual gift in memory of Mary Magdalene Crews Boley*



connie p hall - October 20, 2016 at 07:34 PM

KW

“ *Kathy Walker lit a candle in memory of Mary Magdalene Crews Boley*



Kathy Walker - October 20, 2016 at 06:11 PM

BT

“ *What a classy lady!!*



Bill and Pat Tompkins - October 20, 2016 at 05:53 PM